

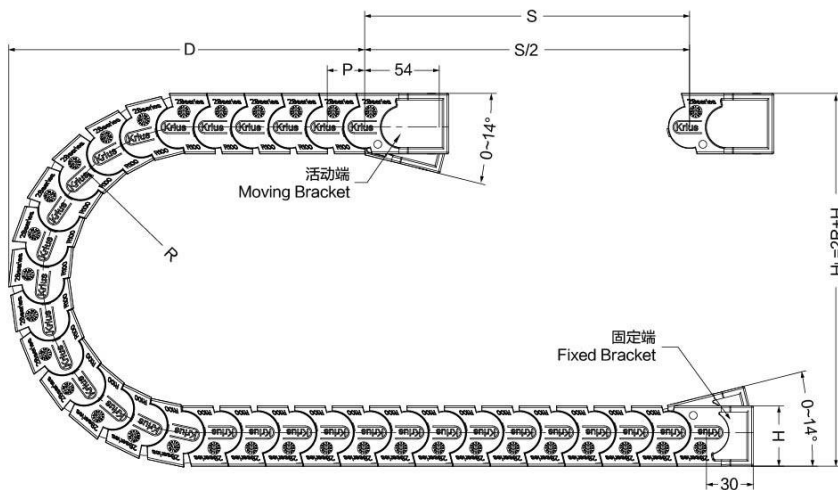
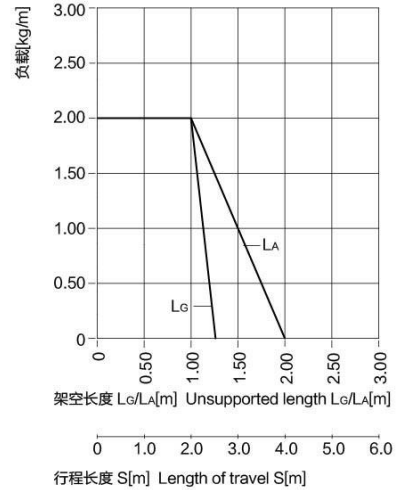
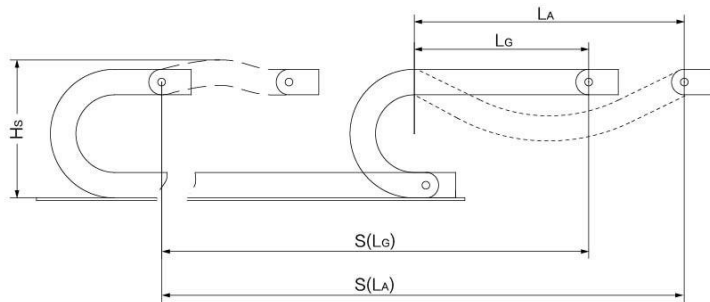
JQ28拖链—安装尺寸及技术参数

JQ28 Cable Chain—Installation Dimensions and Technical Parameters

架空长度

Unsupported length

- L_G = 直线架空长度
- L_A = 安全塌腰架空长度
- L_G = Unsupported with straight upper run
- L_A = Unsupported with permitted sag



- S = 行程长度
- R = 弯曲半径
- P = 节距
- L = 拖链长度
- N = 每米链节数
- H_L = 理论安装高度
- H_s = 实际安装高度
- D = 拖链退回极限位置时的最小距离
- $K = \pi \cdot R + 2P$
- * K值可在科瑞斯相关表格中直接查询
- S = Length of travel
- R = Bending Radius
- P = Pitch
- L = Length of chain
- N = Links per meter
- H_L = Nominal clearance height
- H_s = Required clearance height
- D = Overlength Energy Chain radius in final position
- $K = \pi \cdot R + 2P$
- * You can find it from below chart for more details

R	H _L	D	K	P
55 (2.17)	149 (5.87)	120 (4.72)	220 (8.66)	24 (0.95)
75 (2.95)	189 (7.44)	160 (6.30)	285 (11.22)	24 (0.95)
100 (3.94)	239 (9.41)	210 (8.27)	360 (14.17)	24 (0.95)

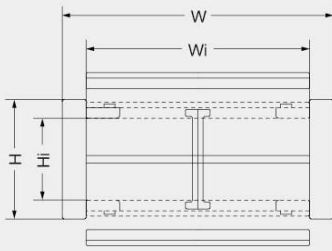
实际安装高度: $H_s = H_L + 40\text{mm}$
拖链长度: $L = S/2 + K$
每米链节数: $N = 42$ (1008mm)

The required clearance height: $H_s = H_L + 1.57\text{in.}$
Chain length: $L = S/2 + K$
Links per meter: $N = 42$ (39.69 in.)

技术参数 Technical Parameters		
速度/加速度 L_G	Speed/acceleration L_G	max.25[m/s]/max.205[m/s ²]
速度/加速度 L_A	Speed/acceleration L_A	max.5[m/s]/max.8[m/s ²]
滑行速度/加速度	Gliding speed/acceleration	max.5[m/s]/max.12[m/s ²]
材料—允许温度℃	Material—permitted temperature	igumid G/-40℃至+125℃
阻燃等级,igumid G	Flammability Class,igumid G	VDE 0304 IIC UL94 V2

JQ28 拖链—产品规格范围 JQ28 Cable Chain—Product specifications

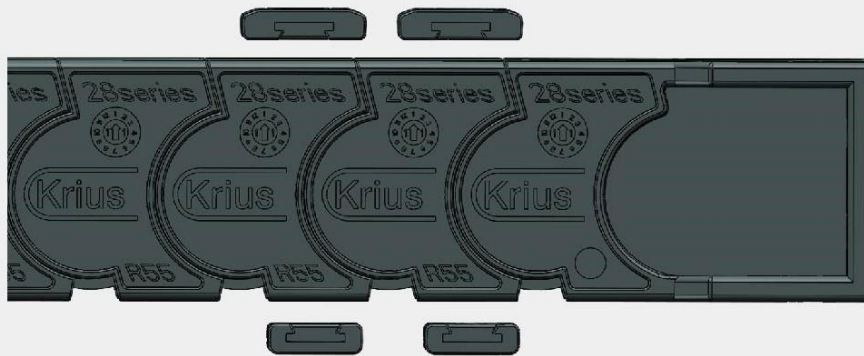
JQ28拖链—内外侧可开 JQ28 Cable Chain—Inner and outer can be opened



产品代码结构
Part Number Structure

JQ2830*R*L*n

- 数量 (Quantity)
- 拖链长度 (Length of Cable chains)
- 弯曲半径 (Bending Radius)
- 内宽 (Inner Width)
- 型号 (Type)



型号 Type	弯曲半径<R> Bending radius	内高<Hi> Inner height	内宽<Wi> Inner width	外高<H> Outer height	外宽<W> Outer Width	重量<G> Weight	备注 Remark
JQ2830	mm (in.)	28.2 (1.11)	30.5 (1.20)	38.8 (1.53)	46.5 (1.83)	0.90 (0.61)	
JQ2850			50.5 (1.99)		66.5 (2.62)	1.03 (0.70)	
JQ2880			80.5 (3.17)		96.5 (3.80)	1.20 (0.82)	
JQ28120			120.5 (4.74)		136.5 (5.37)	1.28 (0.87)	

订货范例
Order details

JQ2830 * R55 * 1000mm * 2

R	Hl	D	K	P
55 (2.17)	149 (5.87)	120 (4.72)	220 (8.66)	24 (0.95)
75 (2.95)	189 (7.44)	160 (6.30)	285 (11.22)	24 (0.95)
100 (3.94)	239 (9.41)	210 (8.27)	360 (14.17)	24 (0.95)

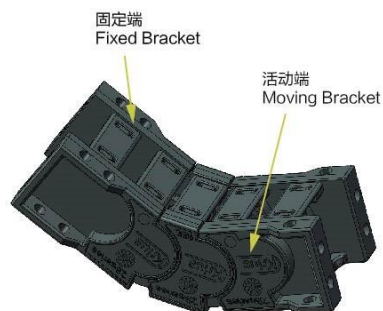


JQ28 Cable Chain
JQ28 拖链

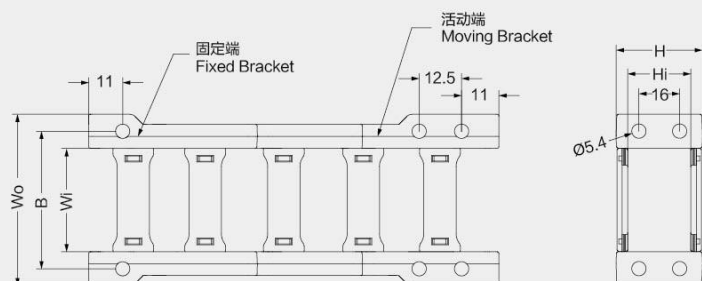
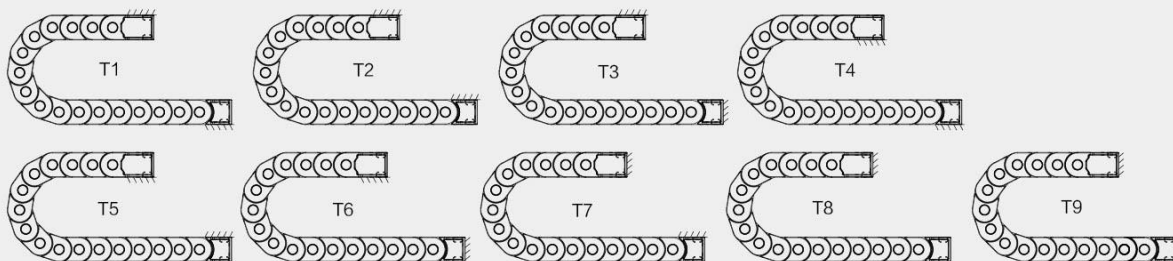
JQ28 拖链-拖链接头 JQ28 Cable Chain-Mounting Bracket

塑料接头, 分体式 Plastic Mounting Bracket, Splited structure

- 各个侧面均有安装孔
- 双侧独立式接头
- 无孔销装配连接
- 两端接头均可活动
- 耐腐蚀 & 耐摩擦
- 可提供预装配形式
- 可实现内外连接
- Mounting brackets with attachment points on each side
- Separate mounting bracket on both sides
- No pin and bore connection
- Moved connectors on both sides
- Anti-corrosion, Rub-resistance, Gliding application
- Available preassembly form
- Can realize the internal and external connections



可选配的接头安装方式 Available installation methods



JQ2830
JQ2850
JQ2880
JQ28120

拖链型号 Type	拖链编码 Code	主体 Main Body Code		其他编码 Other Code		Wo尺寸 Dimension Wo	B尺寸 Dimension B
						mm (in.)	mm (in.)
JQ2830	11211	R55	11206	接头 Mounting Bracket	11209 11210	54.5 (2.15)	44.5 (1.75)
JQ2850	12212	R75	11207	隔离片 Separator	11215	74.5 (2.93)	64.5 (2.54)
JQ2880	12213	R100	11208			104.5 (4.11)	94.5 (3.72)
JQ28120	12214					144.5 (5.69)	134.5 (5.30)

产品代码结构 Part Number Structure

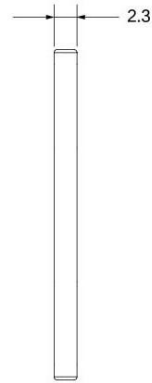
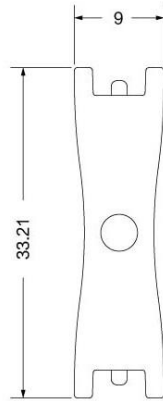
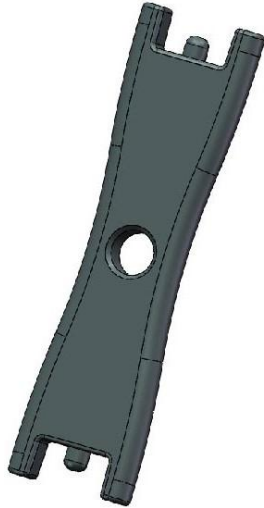
JQ2830*B*T1



- JQ2830*B*T1*n 两端接头
On both brackets
- JQ2830*f*T1*n 固定端接头
Fixed bracket
- JQ2830*m*T1*n 移动端接头
Moving bracket

★ 每款拖链的接头都有所不同, 订购时如有任何疑问, 请及时咨询科瑞斯。
Every bracket is different, please contact us if you have any question.

JQ28 拖链-隔离片 JQ28 Cable Chain-Separator



JQ28拖链隔离片编码: 11215
The separator No. for JQ28 : 11215

- 本款拖链标配隔离片为竖隔片, 可以实现垂直分隔, 也可订制铝杆作为横隔片, 实现水平分隔
- 竖隔片的数量可以根据客户的实际需求进行配备, 可以每隔一个链节装一个, 也可以每隔一个链节装几个, 客户可任意配备
- 竖隔片安装完成后, 不能滑动
- The standard separator is vertical direction which can make the vertical division, and also we can customize horizontal Al separator for horizontal division
- Vertical separators can be placed into each link or different quantity links, it can be customized
- Separator can't be moved after assembling

